



We are ready to **#THRIVEinSEASON5**

Welcome to Celebrity Cheer! Celebrity provides top notch allstar cheerleading training for ages 3 - 18, under the supervision of our professionally trained coaches and staff. Celebrity Cheer is proud to offer novice, prep and elite full year allstar cheerleading teams.

Season 5 Information

2024 - 2025



CELEBRITY CHEER

www.celebritycheerpa.com

>>> THE TRY OUT PROCESS

April 1 - May 17- Registration

Register your athlete(s) for the upcoming evaluation process.
Private evaluations will also be available at an additional cost.

May 17 - Open House + Open Gym (\$15 per athlete)

May 18 - Try Out Clinic (\$20 per athlete)

Athletes are encouraged to attend to learn a small routine for evaluation day as well as work on tumbling.
Video will be posted online for athletes to learn at home as well.
Times: TBD

May 19 - Evaluation Day

Athletes will come in their required birth year time slot. Parents must fill out required paperwork.

May 20 - 24 - Call Back Days

Athletes will be invited back by level for call backs. Your athlete may get more than one level call back to see where they fit best. Call backs attendance is very strongly suggested so we can get to know your athlete better.

Monday, May 20 - Level 3+

Tuesday, May 21 - Level 2

Wednesday, May 22 - Level 1

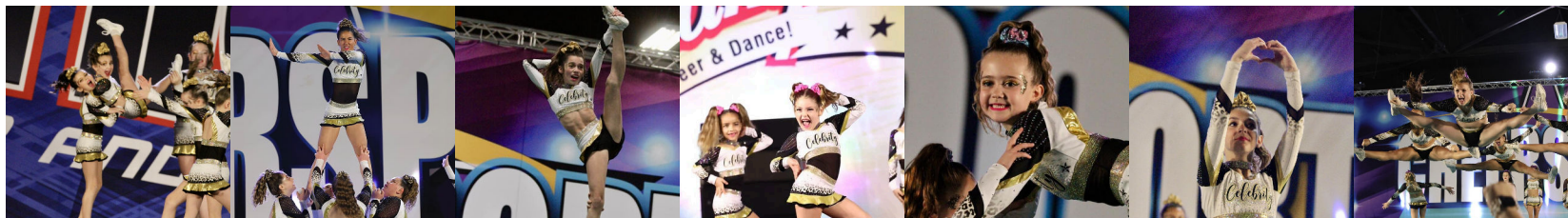
Thursday, May 23 - Level 1 Mini/Tiny/Youth age

May 26 - Team Placements

Team placements will be emailed by 3 PM.

June 1-

First practices for Season 5!



>>> YOU BELONG HERE



CELEBRITY CHEER

www.celebritycheerpa.com

We are incredibly excited to release our information packet for the upcoming 2024 - 2025 all star cheer season. We look forward to an incredible new season!

At Celebrity Cheer, we are entering into our 5th year of competitive all-star cheerleading. We are proud to be one of the best Central PA allstar cheerleading gyms, We promote a positive environment while pushing every athlete to be the best version of themselves. We train athletes of all ages to not only be the best, but to also learn the meaning of teamwork, dedication, commitment, hard work, and perseverance no matter the circumstance. We are a family run all-star cheerleading gym, and pride ourselves on a "family" environment. The Celebrity Cheer "family" is the best!

WHO ARE WE?! CELEBRITY!

Celebrity Cheer came to life in 2020. In these past four years, we have won numerous national championships, first place titles and specialty titles. Above all, we have worked from being a small, two team program to a well recognized, top notch program in Central PA, ending last season with 11 teams. We offer teams for all levels and ages from 3-18. Our fourth season has been our most successful year thus far, earning 6 bids to the D2 Summit and Youth Summit for every one of our Summit eligible teams. We made the climb in Season 4 by winning: D2 Summit bids, Regional Summit bids, US Finals Golden Tickets, multiple national titles. We consistently win "Best Fans", you always know when Celebrity Cheer is in the building!

Celebrity Cheer occupies an 8,000 sq. foot fully equipped professional cheerleading gym. We have knowledgeable staff and coaches, ready to take your athlete to the next level. *Continue to invest and grow with us!*

FINANCIAL AND TIME COMMITMENT

Our full year season begins the first week of June, and runs into the last week of April. In some cases, end of season events can run into early May. Practices and competitions are mandatory, and with that, we have a strict attendance policy.

This information packet will help to outline your expected time and financial commitment. We use this information packet as a beginners guide to our program.

If you have additional questions after reading this, please reach out to us by email.





CELEBRITY CHEER

www.celebritycheerpa.com

>>> EVALUATION/TEAM PLACEMENT DAY



Evaluation day is scheduled for May 19, 2024. Upon the completion of evaluation day, athletes will be given a time for a call back the following day. Call back day will be the following week. This is another opportunity for us to get to know the athletes and see what they are capable of. We do not call this process “tryouts” as everyone is placed on a team. We do not “cut” anyone who has the desire and drive to grow as an athlete! Everyone is placed on a team. We welcome anyone who is able to accept constructive criticism, work hard and strive for greatness.

During eval day, athletes show skills they have developed and demonstrate a potential to learn new skills. Athletes are given numerous opportunities to show skills. If trying out as a flyer, we will ask to see body positions at time of evaluation. During call backs we try to build teams and positions.

Teams are first placed by age, and then skill level. Athletes are placed at a level in which they will **thrive**. Elite teams are expected to hit the elite skills with perfection, and have all the listed skills before “leveling up”.

Following call backs, our staff assembles rosters for the upcoming season. There are many things considered when placing athletes and forming teams. Athlete’s all around **individual skills, stunting position, experience, age, maturity, and what would form the most competitive and successful teams**. After rosters are set, each family is emailed with

their new team placement. If you are not able to attend evaluation day, you are able to register for a Private Tryout for an additional fee.

****NO TEAM PLACEMENT IS FINAL. Celebrity Cheer reserves the right to change any team placement at any time throughout the season. If an athlete progresses or regresses from when they were originally placed, the gym reserves the right to move an athlete to a team that is more appropriate for their skill set.****

We do not know the teams/levels we will have at this current time for Season 5, but we do expect a great turn out for all age groups.

TEAM PLACEMENT is based off of birth year:

2017 - 2021 Tiny
2015-2018 Mini
2012-2017 Youth
2009-2016 Junior
6/1/05-2012 Senior

Just because you are age eligible for a certain age group does not mean you will be placed there.



CELEBRITY CHEER

www.celebritycheerpa.com

ELITE TUMBLING SKILLS CHART BY LEVEL

Don't have any of the listed skills below? We offer teams for any and all skill levels and will not turn anyone away based on inexperience.

This skills list changes annually as the score sheets are updated and modified.

Tumbling is not the only thing we look at when placing a team - every position is valuable.

LEVEL	STANDING TUMBLING	RUNNING TUMBLING
1	<ul style="list-style-type: none"> • Standing 2 BWO Series • Back Walkover Switch Leg <ul style="list-style-type: none"> • FWO - CW • Valdez 	<ul style="list-style-type: none"> • Cartwheel - BWO Series • FWO - Cartwheel/Round Off • FWO - CW - BWO/BWO Series • FWO - CW - BWO Switch Leg
2	<ul style="list-style-type: none"> • BWO Switch Leg - BHS • BHS Step Out - BWO - BHS 	<ul style="list-style-type: none"> • BOUNDER - RO BHS • FWO - RO - BHS/BHS Series • RO 2 BHS
3	<ul style="list-style-type: none"> • BHS - TT - BHS • BWO 2 BHS • BHS STEP OUT 2 BHS 	<ul style="list-style-type: none"> • FWO - Aerial • RO - BHS - Tuck • FWO - RO - to - Tuck
4	<ul style="list-style-type: none"> • BHS/BHS step out - Tuck • Jump - BHS Series - Tuck • Jump - BHS - Tuck 	<ul style="list-style-type: none"> • Front Aerial - RO - to - Whip - Tuck/Layout • Front Handspring/Punch Front - Punch Front • Round off - to - Whip/Tuck - to - Tuck/Whip/Layout • FWO - Round off - to - Whip/Tuck - to - Tuck/Whip/Layout • PF step out - RO - to - Whip/Tuck - to - Tuck/Whip/Layout
5	<ul style="list-style-type: none"> • Tuck - BHS/BHS Series - Tuck • BHS - Whip - BHS - Tuck • BHS Series - Whip/Tuck - BHS - Tuck • BHS Series - Whip - Tuck 	<ul style="list-style-type: none"> • PF step out - RO - to - Full • Front Handspring - PF step out - RO - to - Full <ul style="list-style-type: none"> • RO - to - Whip - to - Full • Front Handspring - Front Full • PF step out - RO - to - Whip - to - Full

Celebrity Cheer follows the United scoring system, and USASF guidelines.



CELEBRITY CHEER

www.celebritycheerpa.com

>>> COSTS

Please see the following chart as a guide to our financial commitment required. These costs do not pertain to the Tiny Novice program.
There are no "hidden" fees. All families must sign a financial agreement per athlete.

FEE EXPLAINED (In order of due date)	COST	DUE DATE
Registration	\$55 - \$35 for returning athletes	Before/on evaluation day
Monthly Tuition 11 monthly payments <u>Any tuition paid after the 1st of the month will be charged a \$30 late fee</u> <small>Tumbling classes are not included and are additional.</small>	\$140.00 elite/prep teams \$120.00 novice teams	First of each month, first payment is due 6/1/2024, last payment is 4/1/2024 *if practices run into May, tuition will be prorated*
Mandatory Fundraiser	\$50.00 buyout, or sell required number of tickets/items	TWO mandatory fundraisers First is due 6/30/2024 , second is due 1/15/2025
Choreography Camp Fees Choreography dates are MANDATORY. If you do not attend your choreo dates your athlete will be removed.	\$60.00	7/1/2024
Rebel/Nfinity/Varsity WHITE Sneakers	Approx. \$100	Any style of white cheer sneaker from the listed brands <u>Must have by first practice</u>
Uniform (Rebel top and skirt - same as season 4)	\$580.00	8/31/2024
Bow/Scrunchie	\$30 per team	8/31/2024
Competition Fees <small>Priced to also include coaches fees</small>	Estimated at \$800 *Does not include year end events*	Payments start October 1 for November, and so on, ending April 1, 2025
Practice Wear Practice wear is mandatory, and any lost or damaged practice must be replaced at the athlete's cost. Includes: Bra top, tank top, crop top	\$125.00	Due by 6/15/24 These sets will be utilized every other practice + at travel competition practices
USASF Membership Fee	Varies per season, approx. \$49	10/15/2024
Make Up We will announce this at a later date.	Estimated at \$30	Need by November
Crossover Fee	Additional \$10/month tuition	Additional competition fees



CELEBRITY CHEER

www.celebritycheerpa.com

>>> DISCOUNTS & WAYS TO SAVE

Sibling Discount: \$10.00 off monthly tuition per additional athlete. Must reside in the same household.

Loyalty Discount: \$20.00 off monthly tuition if you have been with us consistently for two seasons - **must have been with us since evaluation day, Season 3.**

You cannot combine discounts (for example, both sibling + loyalty) - select one or the other, whichever option is best for your family.

Obtain a Sponsorship - We welcome athletes to seek sponsors from our community. Sponsorships are split with the gym, 20% goes to the gym, 80% goes to the athlete's account. Sponsorships are due in our hand by 7/15/2024. Papers to obtain these will be located at the gym's desk.

Pay in Full Option - Paying in full for the season's tuition gets you a FREE month of tuition. You must choose this option and pay **before/on** June 1 to qualify. Tuition cost x 10 = the total cost. NO other discounts apply to those paying in full.

Celebrity Cheer Allstars Booster Club - (CCAB) runs events all year to raise money for our full year cheer families. Every athlete benefits from this. It is the booster club's hope and intention to raise \$200 per athlete to go towards competition fees. More information on required volunteer time will be available soon.

PAYMENT METHODS ACCEPTED: Online portal using cards/checks, Venmo, cash, personal checks

>>> PAYMENT SCHEDULE

Payment Schedule	Explanation
June 1, 2024	First month's tuition payment, mandatory fundraiser due, vacation dates due, practice wear payment due
July 1, 2024	Tuition Payment
August 1, 2024	Tuition Payment, Uniform payment due 8/31, Bow payment due 8/31
September 1, 2024	Tuition Payment
October 1, 2024	Tuition Payment, November's competition fees USASF Membership Due 10/1
November 1, 2024	Tuition Payment, December's competition fees
December 1, 2024	Tuition Payment, January's competition fees
January 1, 2025	Tuition Payment, Mandatory fundraiser due February's competition fees
February 1, 2025	Tuition Payment, March competition fees Summit fees are usually due
March 1, 2025	Tuition Payment, April's competition fees Usually year end event fees are due this month
April 1, 2025	Tuition Payment



CELEBRITY CHEER

www.celebritycheerpa.com

>>>CROSSOVERS: At the start of the season, we will ask for your interest in being a crossover. A crossover is also referred to as a double teamer, so being placed on TWO teams. We do consider it an honor to be a crossover - not all athletes are up for this challenge. . This does mean additional practices and competition fees for your crossover athlete. Sometimes competition fees are discounted for the second performance, but not always. Not all athletes will be chosen to crossover, regardless of the interest.

>>> COMPETITION SCHEDULE: Celebrity Cheer plans to focus on larger Varsity events. Not all teams attend the same competitions. Hotels are sometimes required (stay to play), however, we do try to steer clear of those events as much as possible. Full competition schedule will be made available in August. No competition schedule is ever final, and no competition fees are refundable. We try our best to stick to the schedule once it comes out, but things can change. The competition schedule can change at any point in the season, and competitions may be added or removed. Competition schedule changes may be due to unforeseen circumstances such as lack of preparation due to athlete attendance or injury, venue change, a change in the event date, etc. If you have any questions regarding competitions or competition costs, please do not hesitate to ask. Celebrity does try to stay in an affordable range. Competitions are usually a full day event and all athletes must stay for awards ceremonies.

>>>> TIME COMMITMENT

TEAM LEVEL	PRACTICE SCHEDULE	COMPETITION SCHEDULE To begin in November	YEAR END EVENT GOAL
Elite Teams	2 hours, 2 times a week Additional practice time as needed	Approx. 1-2 competitions a month, Some teams will be traveling to *Atlanta, GA, OR *Dallas, TX* Youth team may attend Youth Summit in Tampa, FL Junior/Senior teams will attend the D2 Summit in Orlando, FL. <small>*Competition schedule is not yet set but we expect to take all elite teams to Atlanta and are looking at taking two teams to Dallas, TX.*</small>	D2 Summit for Junior/Senior Teams Youth Summit for Youth Teams US Finals for Mini/Tiny Teams
Prep Teams	1.5 hours, 1 time a week in summer Changing in August to 2x a week	Approx. 1 competition a month	US Finals
Novice Teams	1-1.5 hours, 1 time a week over the summer Changing in August to 2x a week	Approx. 1 competition a month	US Finals
Tiny Novice Teams	1 hour, 1 time a week	3 competitions, 1 big year end event Travel required: 1-3 hours drive time	US Finals



CELEBRITY CHEER

www.celebritycheerpa.com



>>> Tiny Novice Program

Our tiny program runs from June - April. This tiny novice team trains athletes ages 3 - 7. Our tiny friends are taught basic cheerleading and tumbling foundation skills, motor and coordination skills, as well as the definition of teamwork. This is a great stepping stone for our small but mighty growing athletes that will one day venture into more advanced skills and teams. We have a great balance of work and play put into the practices. Potential athletes must be potty trained.

It is important to note that we have multiple teams for tiny age athletes. We offer tiny novice, tiny prep, tiny elite and mini novice. We place athletes based on age, maturity and skill level. If we believe your athlete is ready for the next step, they could make a different team.

Practice commitment: These teams practice **1 day a week, for 1 hour.**

This age level also must comply with our attendance policy, as all practices and competitions are mandatory.

NEW this season - Tiny Stars will only attend 3 competitions + 1 year end event. These 3 competitions will be large, Varsity only events.

The tiny athletes build great friendships while working hard and having fun.

This team has all inclusive pricing, all competitions are included except for their year end event.

We do a choreography camp in July where they will start to learn their routine.

Included in their monthly tuition is their practice time, competition fees (except for big year end event), music fees, and choreography fees.

AGE REQUIREMENT: Must be 3 by May 1, 2025.

Tiny Novice Program Costs:

WHAT:	FEE:	DUE DATE:
Registration	\$55 New athletes - \$35 Returning athletes	Due on/before eval day
Monthly Tuition 11 monthly payments <small><u>Any tuition paid after the 1st of the month will be charged a \$30 late fee.</u></small>	\$110.00	Due on the 1st of each month First payment is June 1, 2024, Final payment is April 1, 2025
Competition Fees	All competition fees included except for one national in April (estimated at \$200)	April competition fee will be due March 1, 2025
Uniform	\$175.00	Due 8/31/2024
Bow(s)	\$30.00	Due 8/31/2024
Mandatory Fundraiser	\$50.00 buyout OR sell items	TWO MANDATORY FUNDRAISERS, first is due 6/30/2024 , second is due 1/15/2025 .
Camp Fee	\$50.00	Due by 7/1/2024
White Cheer Sneakers	Approx. \$40-\$100	Required at time of first practice - no specific brand required for tiny novice teams
Mandatory Practice Wear Set	\$100	Due 6/1/24





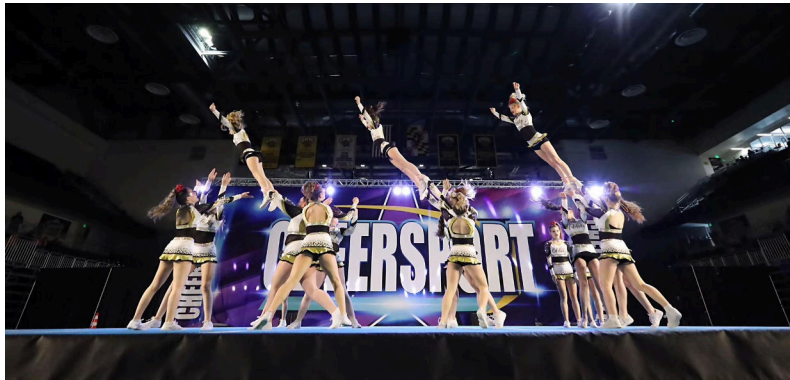
CELEBRITY CHEER

www.celebritycheerpa.com

>>>> **SUMMER PRACTICE** schedule consists of typically weekdays only. Our schedule then changes mid-August at the start of school to include 1 weekend day, and 1 weekday for most teams (does not apply to all teams).* Subject to change based off of the number of teams/demand* Sometimes additional practices are required, typically around competition days. These are mandatory, and we give our best to give you as much notice as possible.

>>> **ATTENDANCE POLICY:** We have a very strict attendance policy as this is a team sport and everyone is valuable. When we are missing even one athlete, everyone feels the absence as we are not able to get things done without everyone in attendance. **We have a “3 unexcused” rule, after three unexcused absences, you may be removed from the program.** Excused practices require a doctor’s note or a school graded activity. Practices the week of competitions are mandatory - if you miss for **any** reason at all, your athlete is not able to compete. Competitions are mandatory - this should go without saying. Failure to attend a competition would result in immediate removal from the program.

>>> **VACATION DATES:** If you have a planned summer vacation, we ask for those dates by June 1 to make those “excused” practice dates. We ask that you limit these to SUMMER vacations, as we have noticed families abusing this. Adding in additional days for your family to have off over different holidays is not what this is for. **These vacation dates are not excused the week of a competition, over a competition, or during choreography. Choreography dates are mandatory no matter the reason.**



The gym is closed the week of July 1 - 8 to all team practices and tumbling. We are not school affiliated and do not follow any school closings, delays or cancellations.

Gym closed dates:

- July 1 - 8, 2024
- October 31, 2024
- November 28, 2024
- December 24 - 26, 2024
- December 31, 2024
- January 1, 2025
- April 20, 2025

>>>>**CHOREOGRAPHY OR “CAMP” DAYS:** Each team will have choreography or “camp” day(s). These typically happen on weekdays, so it’s important to plan for transportation. We will have these dates for you when you receive team placement. These typically happen in mid-July to early August. Most teams will meet 1-3, 6-8 hour days to learn their routine. Sometimes we bring in outside choreographers, but we also utilize our staff who are very talented in choreography. We do a lot of our own in-house choreography.

Let’s h these days together! We recommend not planning other activities on these days as we need the athletes to be physically and mentally present.

Some elite teams will have multiple choreography days - one in June to learn stunt choreography and one in July/August to learn routine creativity.

>>> **STUNT CAMP:** Certain teams will be expected to attend a mandatory stunt camp. This is sometimes taught by an outside instructor, or is also sometimes taught by our knowledgeable staff.

>>> **QUITTERS FEE:** Applies to all prep and elite teams. If you are to leave the program or removed from the program for any reason **after your team’s choreography dates**, there is a quitters fee of \$350. This will be due immediately after leaving the program and covers the cost of the choreographer making the required changes to the routine after an athlete leaves the program. All parents are required to sign a financial agreement acknowledging this fee.



CELEBRITY CHEER

www.celebritycheerpa.com

>>> **OTHER SPORTS:** We do not limit our athletes from participating in other sports or events, however, our program must come first. We do not allow athletes to miss practice, camps or competitions because of other activities.

>>> **PARENT/COACH COMMUNICATION:** We have a program Facebook group for important information, but we mainly use the BAND App to communicate for each specific team. We will give you a team specific code/group when teams are formed. We ask that all communication is kept on the BAND app.

>>> **HANDBOOK:** All parents and athletes are required to read and sign an electronic handbook once committing to their teams. We encourage you to go over these policies with your athlete as well. This will include gym rules and regulations.

>>> **PRACTICEWEAR:** We encourage athletes to wear Celebrity apparel or colors to practice. Athletic wear, sports bras are required, hair must be up and out of the face. No jewelry or long nails. There is no reproduction of the Celebrity Cheer name or logo allowed without prior permission from us first. New this season, we will require mandatory practice wear on certain days (not every day).

>>> **TUMBLING:** Tumbling is not included in an athlete's monthly tuition cost. We do offer discounted tumbling class pricing for all registered athletes, at \$15 a class. We also offer private lessons with multiple instructors throughout the week. At practice we mainly focus on routine based tumbling skills. If you want to continue to build skills and level up, tumbling classes or privates are the way to learn.

>>> **STAFF:** We have an extremely knowledgeable USASF certified coaching staff. Coaches are assigned to teams, but ultimately we all work together to make the dream work.

>>> **COMMITMENT:** Ultimately, Celebrity Cheer is a big time and financial commitment, but above all, it's a commitment to be your best self and the best teammate you can be. The summer months are long and hot, but competition season/winter seems like it goes by so quickly. Celebrity Cheer is not only a cheerleading program, but a family, and we hope that you leave each season with *memories to cherish forever*.

